

## LEGAL DESCRIPTION

The Northeast 1/4 of the Northeast 1/4 of Section 36, Town 1 North, Range 18 East, Walworth County, Wisconsin.

The above described parcel is more particularly described as follows:

Beginning at the Northeast corner of Section 36, run thence South 01°40'05" East, along the east line of the Northeast 1/4 of said section, 1327.43 feet; thence South 88°33'10" West, along the south line of the Northeast 1/4 of the Northeast 1/4 of said section, 1323.39 feet; thence North 01°39'18" West, along the west line of the Northeast 1/4 of the Northeast 1/4 of said section, 1327.515 feet; thence North 88°33'24" East, along the north line of the Northeast 1/4 of said section, 1323.09 feet to the point of beginning.

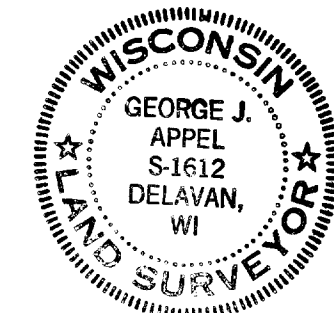
Containing 40.325 acres of land, more or less.

Subject to Wild Rose Road right-of-way over the South 33 feet and any easements of record.

"I hereby certify that this survey was made under my direction and that the above map is a true representation thereof".

NO MONUMENTATION HAS BEEN WAIVED IN ACCORDANCE WITH A-E 7.01(2) OF THE WISCONSIN ADMINISTRATIVE CODE.

*George J. Appel*  
GEORGE J. APPEL, S1612



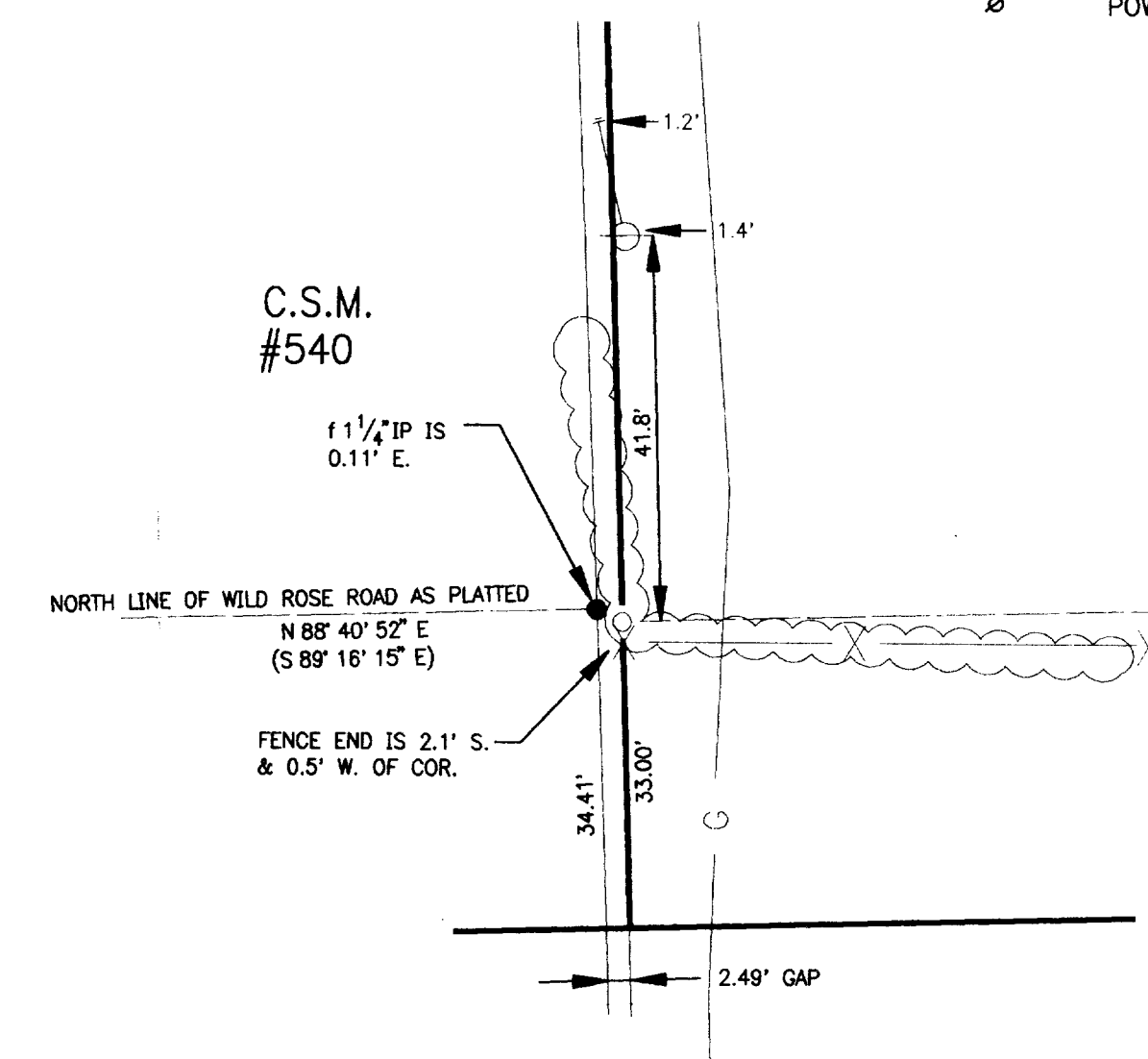
This is an original print only  
if seal is imprinted in red.

## LEGEND

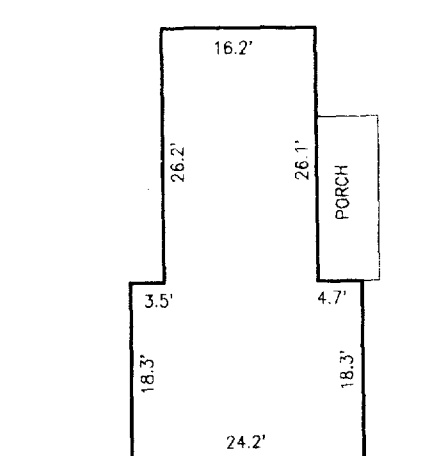
- FOUND BRASS CAPPED MONUMENT
- FOUND IRON PIPE - SIZE AS NOTED
- SET 1" IRON PIPE
- ( ) RECORDED AS
- X — X FENCE
- ⚡ POWER POLE

SCALE 1" = 80'

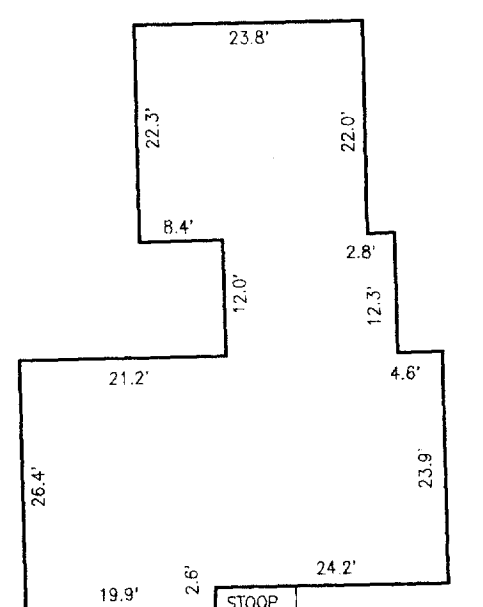
BEARINGS ARE BASED ON THE EAST LINE OF THE NE 1/4 OF SECTION 36, T.1N., R.18E., BEARING S 01°40'05" E., WISCONSIN COORDINATE SYSTEM, SOUTH ZONE.



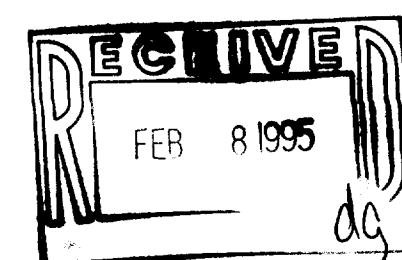
DETAIL 1  
SCALE 1" = 20'



ABANDONED DWELLING  
DETAIL  
SCALE 1" = 20'



EXISTING DWELLING  
DETAIL  
SCALE 1" = 20'



NORTH 1/4 CORNER  
SEC. 36-1-18

N88°33'24"E

1323.09'

NE COR.  
SEC. 36-1-18

1327.43'

EAST LINE NE 1/4 OF SEC. 36-1-18

1294.43'

11.2'

S01°40'05"E

EAST 1/4 COR.  
SEC. 36-1-18

40.325 Ac.±  
inc. R-0-W

Woods

APPROXIMATE LOCATION OF A 10" H.P. GAS MAIN

C.S.M.  
#540

SEE DETAIL 1

1 1/2" IP

4.44' GAP

9.3'

197.0'

270.6'

176.1'

9.2'

12.0'

8.4'

1 1/2" IP

30.00'

8.4'

12.0'

8.4'

12.0'

8.4'

12.0'

8.4'

12.0'

8.4'

12.0'

8.4'

12.0'

8.4'

12.5'

13.5'

13.5'

13.5'

13.5'

13.5'

13.5'

13.5'

13.5'

13.5'

13.5'

13.5'

13.5'

13.5'

13.5'

13.5'

13.5'

13.5'

13.5'

13.5'

13.5'

13.5'

13.5'

13.5'

13.5'

13.5'

13.5'

13.5'

13.5'

13.5'

13.5'

13.5'

13.5'

13.5'

13.5'

13.5'

13.5'

13.5'

13.5'

13.5'

13.5'

13.5'

13.5'

13.5'

13.5'

13.5'

13.5'

13.5'

13.5'

13.5'

13.5'

13.5'

13.5'

13.5'

13.5'

13.5'

13.5'

13.5'

13.5'

13.5'

13.5'

13.5'

13.5'

13.5'

13.5'

13.5'

13.5'

13.5'

12.5'

13.5'

13.5'

13.5'

13.5'

13.5'

13.5'

13.5'

13.5'

13.5'

13.5'

13.5'

13.5'

13.5'

13.5'

13.5'

13.5'

13.5'

13.5'

13.5'

13.5'

13.5'

13.5'

13.5'

13.5'

13.5'

13.5'

13.5'

13.5'

13.5'

13.5'

13.5'

13.5'

13.5'

13.5'

13.5'

13.5'

13.5'

13.5'

13.5'

13.5'

13.5'

13.5'

13.5'

13.5'

13.5'

13.5'

13.5'

13.5'

13.5'

13.5'

13.5'

13.5'

13.5'

13.5'

13.5'

13.5'

13.5'

13.5'

13.5'

13.5'

13.5'

13.5'

13.5'

13.5'

13.5'

13.5'

13.5'

12.5'

13.5'

13.5'

13.5'

13.5'

13.5'

13.5'

13.5'

13.5'

13.5'

13.5'

13.5'

13.5'

13.5'

13.5'

13.5'

13.5'

13.5'

13.5'

13.5'

13.5'

13.5'

13.5'

13.5'

13.5'

13.5'

13.5'

13.5'

13.5'

13.5'

13.5'

13.5'

13.5'

13.5'

13.5'

13.5'

13.5'

13.5'

13.5'

13.5'

13.5'

13.5'

13.5'

13.5'

13.5'

13.5'

13.5'

13.5'

13.5'

13.5'

13.5'

13.5'

13.5'

13.5'

13.5'

13.5'

13.5'

13.5'

13.5'

13.5'

13.5'

13.5'

13.5'

13.5'

13.5'

13.5'

13.5'

13.5'

12.5'

13.5'

13.5'

13.5'

13.5'

13.5'

13.5'

13.5'

13.5'

13.5'

13.5'

13.5'

13.5'

13.5'

13.5'

13.5'

13.5'

13.5'

13.5'

13.5'

13.5'

13.5'

13.5'

13.5'

13.5'

13.5'

13.5'

13.5'

13.5'

13.5'

13.5'

13.5'

13.5'

13.5'

13.5'

13.5'

13.5'

13.5'

13.5'

13.5'

13.5'

13.5'

13.5'

13.5'

13.5'

13.5'

13.5'

13.5'